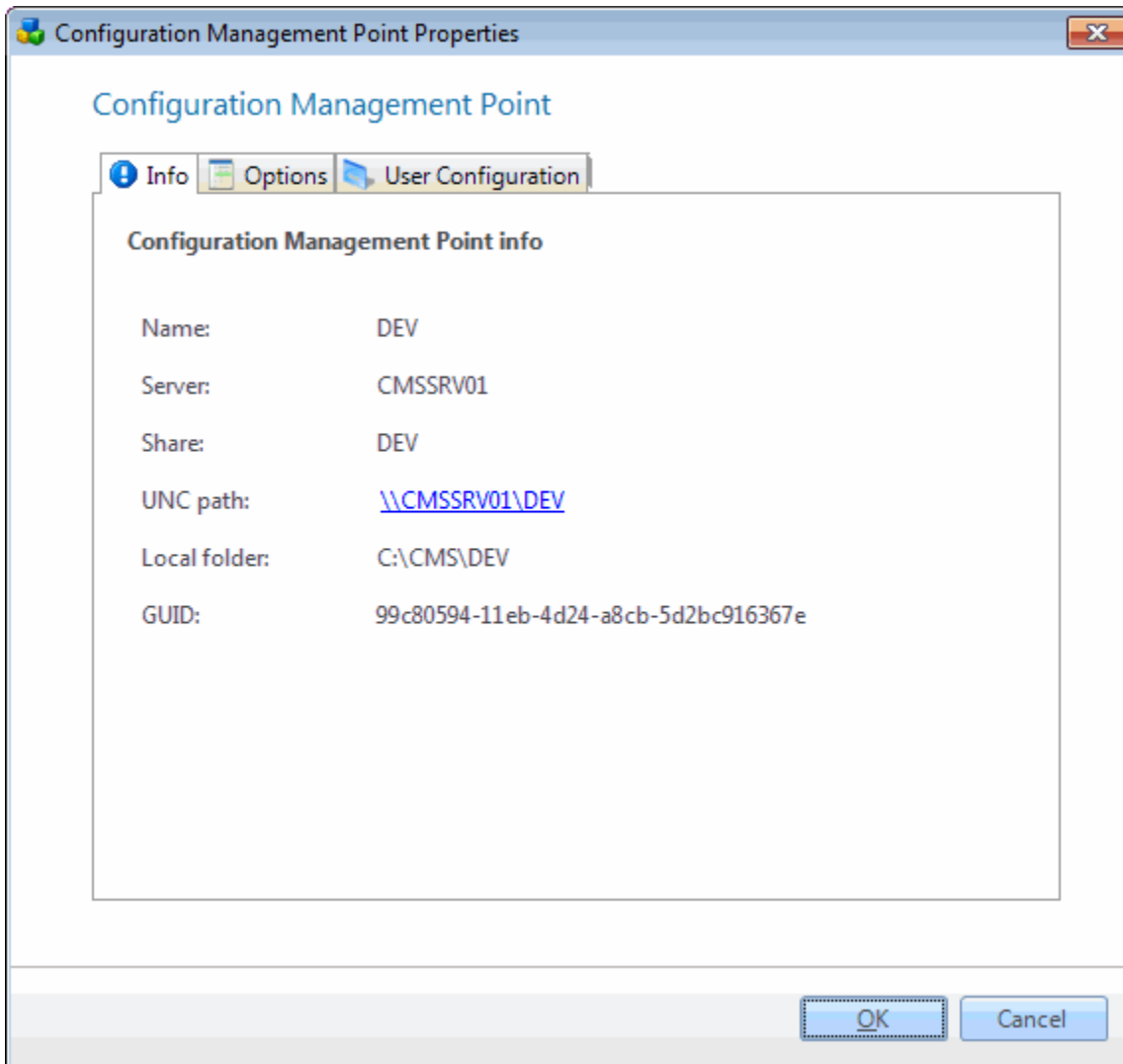
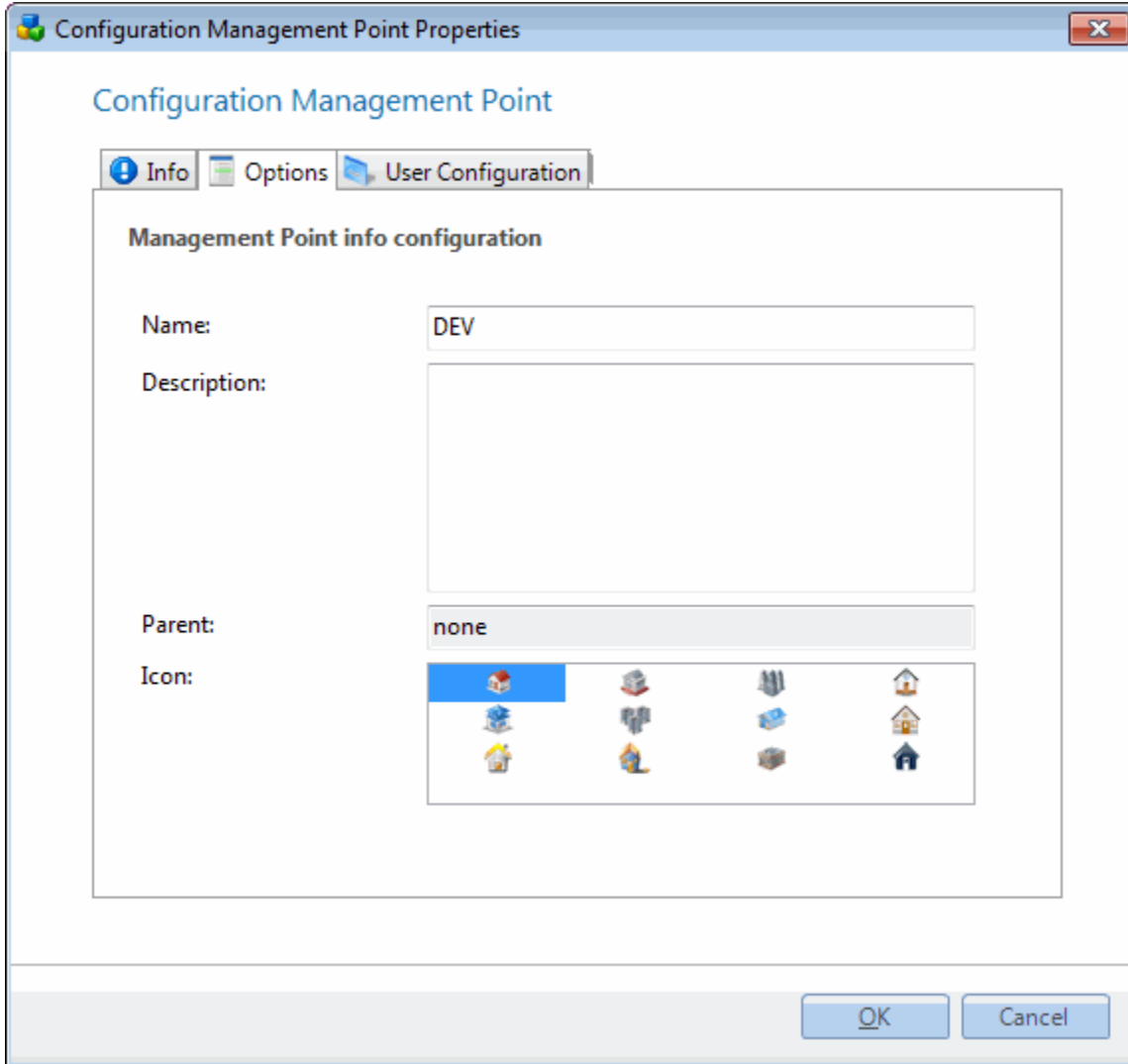


# Configuration management point properties

**Introduction** From Configuration Management Point Properties you can view details for where the Point is placed. You can also change its name, icon and description.



Element	Description
Name	The name of the Configuration Management Point.
Server	The name of the server where the share resides.
Share	The share name.
Uncpath	The UNC path to the Point. Clicking on the text will bring up an explorer to the path.
Local folder	The full to the folder on the local server.
GUID	Global Unique Identifier for the Management Point.



Element	Description
Name	Editable name of the Management Point. Can be changed without any conflicts.
Description	A text describing the Management Point.
Parent	Name of the parent Management Point if such exists.
Icon	Select between the list of icons. Currently used icon is selected by default.
Change Description	A text describing the change you made to the Management Point.

Configuration Management Point Properties

## Configuration Management Point

Info Options User Configuration

**Configure Management account.**

Set a Management account to allow access to this Server.

Enable management account

User name

Password

Retype password

OK Cancel

Element	Description
Enable management account	Make CapalInstaller use the specified user account to access to Management Point
User name	Name of the account to use, specify any domain name required in the form domain\name or use UPN form
Password	Password for the account
Retype password	Retype the password for validation